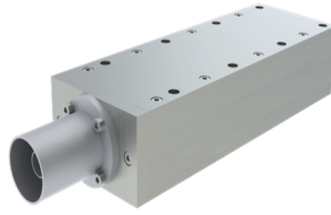


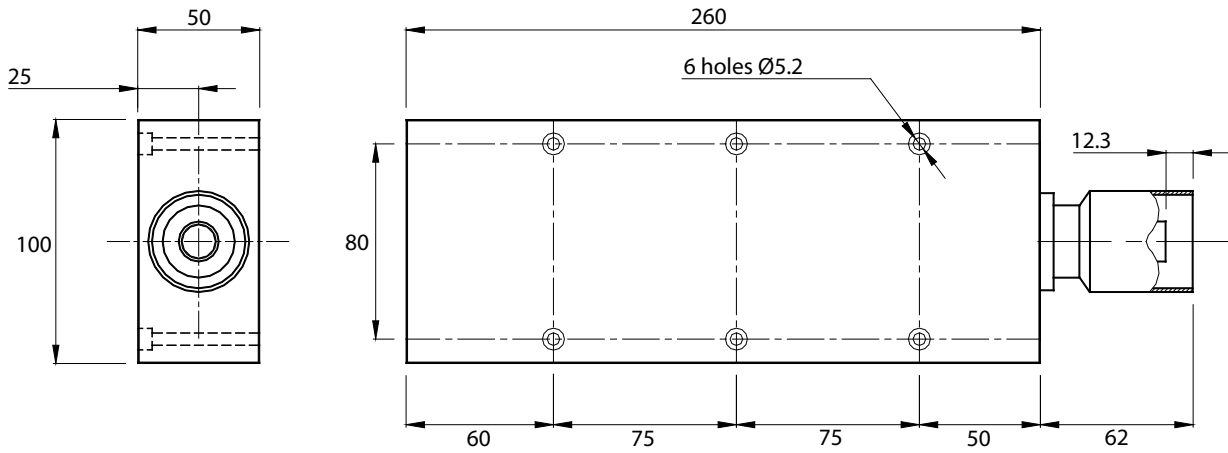
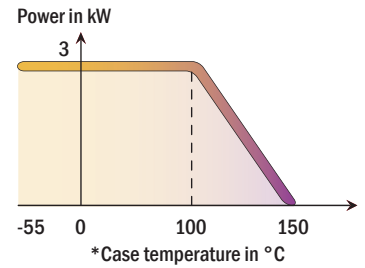
3 kW Load for integration



Standards
NF C 96-315
MIL-DTL-39030



Impedance	50 Ω \pm 5%
Frequency	DC - 1 GHz
Max VSWR	\leq 1.30 à 1 GHz
Temperature range	-55 to +150 °C
Material	Cu-Al
Average power @ 100 °C*	3 kW



Dimensions in mm

P/N	Connector
17-0637	EIA 1.5/8"

Other connectors on request

Option NU VSWR \leq 1.05 from 470 to 860 MHz for digital applications

Designed for water cooled or forced air heat exchanger

