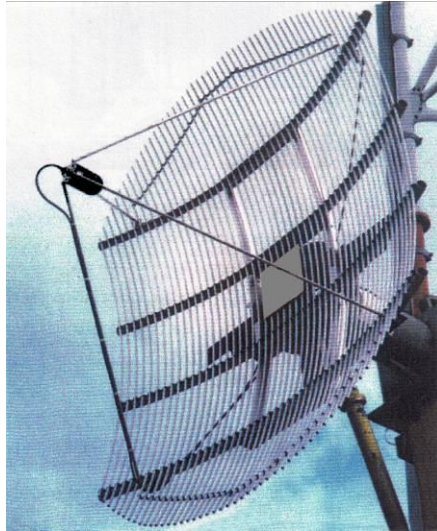
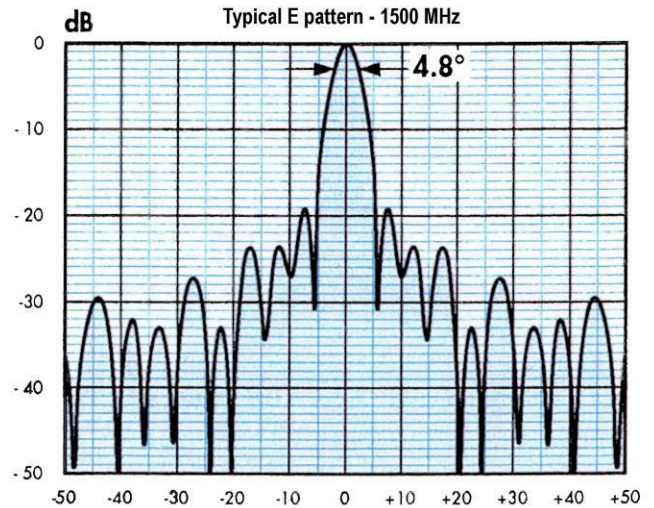
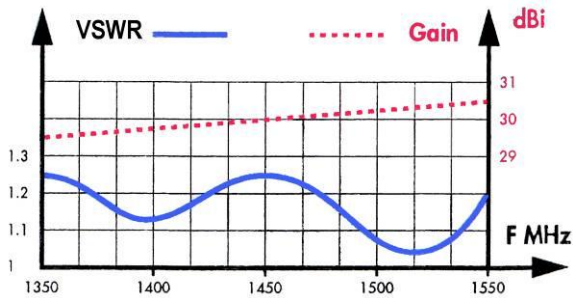


APG 10 - 1500



Frequency range	1350 to 1550 MHz	Reflector dimension	10 ft (Ø 3 m)
Impedance	50Ω	Material	Aluminium alloy
VSWR in the band	<1.5	Weight with mountig interface	70 kg
Isotropic gain	30.5 dBi	Winspeed resistance	180 km/h
Polarization	Vertical / Horizontal	Wind load at 160 km/h	
Medium beamwidth at -3dB	4.8°	- Front	470 daN
Front-to-back ratio	35 dB	- Side	215 daN
Cross polarization	>33 dB	Temperature range	-40° at +70°C
Maximum input power	100 W	Mounting hardware	FIX 7 + FIX 35
Connector	Nf – RG 214/U - L = 3m		



P / N	MODEL
99-0074	APG 10 - 1500AN standard version