

# AU P 3-15 Antenna



ETSI class 2 compliant



## ELECTRICAL CHARACTERISTICS

Frequency range	: 1350 à 1550 MHz
Impedance	: 50 $\Omega$
VSWR	: < 1.4
Gain isotropic at 1.5 GHz	: 20,7 dBi
Polarization	: Vertical or Horizontal
Radiation Pattern beamwith 3°	
- E plan (vertical)	: 15°
- H plan (horizontal)	: 15.5°
Power	: 100W
Front to back ratio	: 30 dB
Cross polarisation	: > 27 dB
Output	: fiche N Female

All metallic parts are linked to the ground

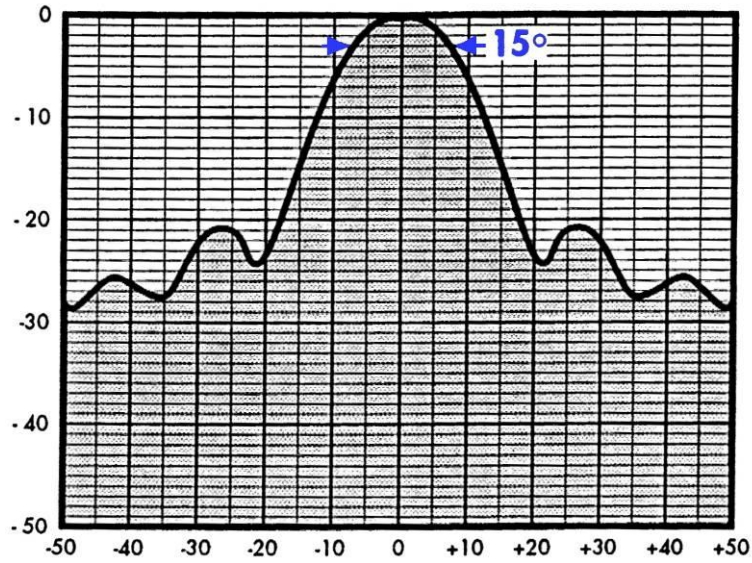
## MECHANICAL CHARACTERISTICS

Ø reflector	: 0.90 m (3 ft)
Ø total	: 0.97 m
Length	: 0,68 m
Material	: AGS –Brass –Stainless Steel A4
Weight	: 23 kg
Wind speed survival without frost	: 200 km/h
Wind loading	: 182 daN front / 87 daN side
Temperature	: -40° à +80° C
Color	: White (RAL 9010)
Fixation	: tube Ø 114mm

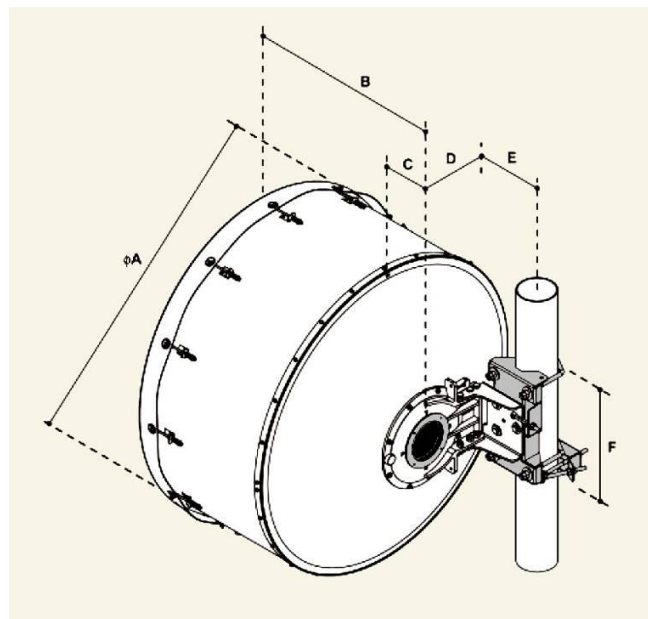
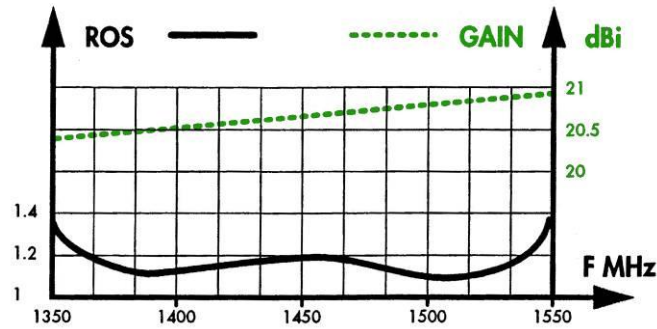
Ed. 1-01/12EN



dB Diagramme typique plan E - 1500 MHz



Courbes typiques de ROS et de gain



P / N	MODEL
99-0078	AU P 3-15 standard version

Ø A	B	C	DØ114	E	F
970mm	620mm	170mm	317mm	100mm	365mm

Toutes données présentes dans ce document devront être confirmées lors de la commande