

Tactical Antenna - AHF NVIS 2-30 T



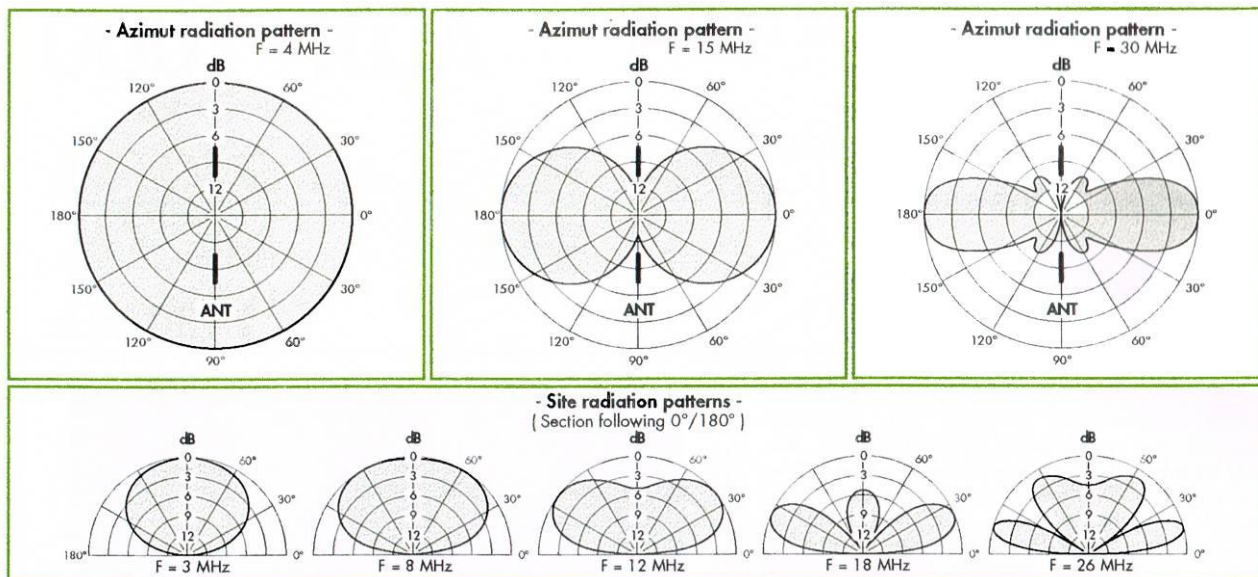
RADIO-ELECTRICAL CHARACTERISTICS

Frequency range	: 2 to 30 MHz
Input impedance	: 50 Ω
VSWR after tuning	: < 1.2, 80% of the time : < 1.5, 98% of the time
Isotropic gain	: -2 dBi to 2 MHz : 2 to 7 dBi for > 3 MHz
Polarization	: Horizontal - NVIS
Radiation pattern	: see patterns
Maximum input power	: 1 kW cw
Switching time	: < 10 ms
Standard output connector	: N female

MECHANICAL CHARACTERISTICS

Aperture	: 16 m
Total weight	: 90 kg
Height of the tactical mast	: 9 m
Staying radius	: 4 m
Staying	: 2 levels of 4 stays
Assembly time	: 30 mn for 2 mans
Rated wind velocity	: 120 km/h without frost
Temperature range	: -30° to +70°C
Standard packing	: 7 protecting bags

RADIATION PATTERN



P / N	MODEL
99-0099	AHF NVIS 2-30T standard version

All information in this data sheet should be confirmed on order