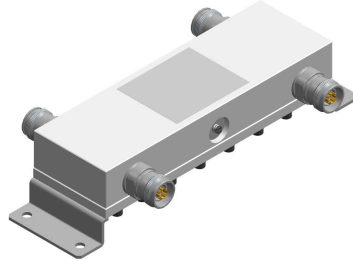
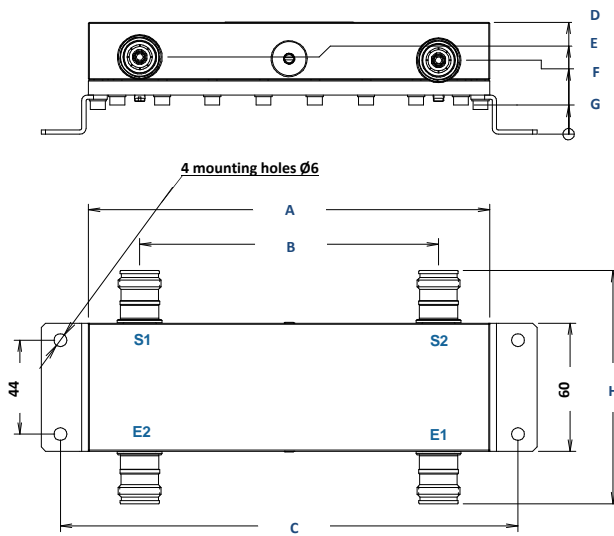


Hybrid Coupler
698 – 2700MHz



Impedance	: 50Ω
Intermodulation IM3 (2 x 20 W carriers)	: ≤ -160dBc
Isolation	: > 29dB (3dB 698-960MHz) - >25dB (4.7dB 698-960MHz) - >20dB (other Couplers)
Return Loss	: > 23dB (3dB 698-960MHz) - >20dB (4.7dB 698-960MHz) - >19dB (other Couplers)
Power Rating	
- If used as a combiner (2 → 1)	: 100W
- If used as a divider (1 → 2)	: 200W
Temperature Range	: -30°C – +70°C
Weight	: 1.3 kg
Tightness index	: IP 65

Dimensions



Coupling Att. / Frequency Band	Part Number		Dimensions (mm)							
	4.3-10f	7-16f	A	B	C	D	E	F	G	H
3dB / 698-960MHz	14 900 179	14 900 169	131	83.5	157.4	49.4	35.0	32.8	11.6	115
4.7dB / 698-960MHz	14 900 180	14 900 170	131	83.5	157.4	49.4	35.0	32.8	11.6	115
3dB / 1710-2700MHz	14 900 173	14 900 163	188	144	214.4	52.4	36.1	34.6	13.6	110
3dB / 698-2700MHz	14 900 172	14 900 162	188	144	214.4	52.4	36.1	34.6	13.6	110