

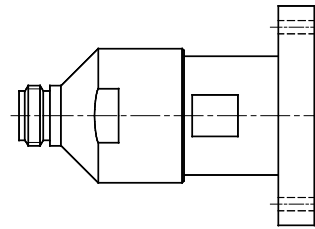
Adaptors



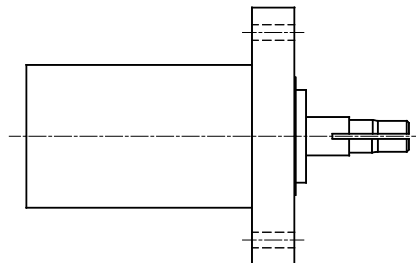
Standards
IEC 60339-2
IEC 60169-4



P/N	Adaptor
93-0036	EIA 7/8" - Nf
93-0172	EIA 7/8" - Nm
93-0102	EIA 7/8" - 7-16f
93-0170	EIA 7/8" - 7-16m
93-0059	EIA 7/8" - LCf
93-0101	EIA 1.5/8" - Nf
93-0135	EIA 1.5/8" - 7-16f
93-0107	EIA 1.5/8" - 7-16m
93-0077	EIA 1.5/8" - EIA 7/8"
93-0079	EIA 3.1/8" - EIA 1.5/8"
93-0161	7-16m - 7-16m
93-0162	7-16f - 7-16f
93-0166	7-16f - Nf
93-0165	7-16f - Nm
93-0164	7-16m - Nf
93-0163	7-16m - Nm
93-0105	4.5-15m - 7-16f



P/N	Adaptor
93-0071	EIA 1.5/8" - RL 1.5/8"
93-0072	EIA 3.1/8" - RL 3.1/8"

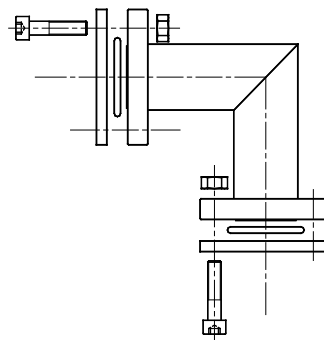


Others models on request

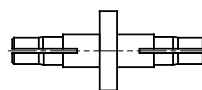
Standards
IEC 60339-2
IEC 60169-4



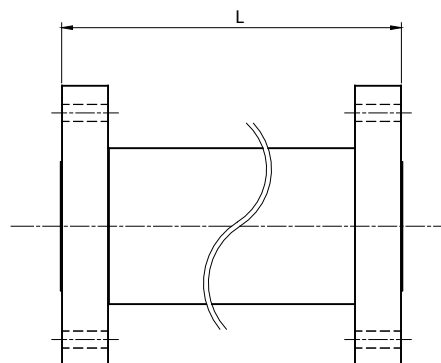
P/N	Right angle
93-0042	EIA 7/8"
93-0043	EIA 1.5/8"
93-0167	7-16 m - 7-16 f



P/N	Splice
93-0005	EIA 7/8"
93-0034	EIA 1.5/8"
93-0116	EIA 3.1/8"



P/N	Rigid Line	L (m)
93-0181	EIA 1.5/8"	0.15
93-0156	EIA 1.5/8"	0.50
93-0157	EIA 1.5/8"	1.00
93-0158	EIA 1.5/8"	0.30



Others models on request

